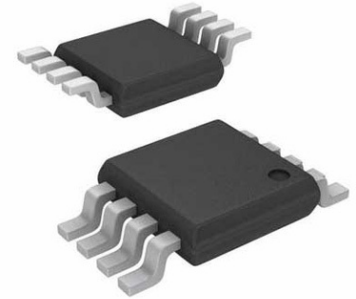


## Pwr Mux Autoswitch 1.5V to 5.5V 1.25A Automotive 8-Pin TSSOP T/R



Images are for reference only

[Inquiry](#)

**Manufacturer:** [Texas Instruments, Inc](#)

**Package/Case:** TSSOP8

**Product Type:** Switches

**RoHS:** RoHS Compliant/Lead free 

**Lifecycle:** Active

### General Description

The TPS2115A-Q1 power multiplexer enables seamless transition between two power supplies, such as a two supply rails or a battery and AC to DC wall adapter. Each supply operates at 2.8 V to 5.5 V and the output can deliver up to 1 A. The TPS2115A-Q1 device includes extensive protection circuitry including user-programmable current limiting, thermal protection, inrush current control, seamless supply transition, cross-conduction blocking, and reverse-conduction blocking. These features greatly simplify designing power multiplexer applications.

## Key Features

Qualified for Automotive Applications

AEC-Q100 Qualified With the Following Results:  
Device Temperature Grade 3: -40°C to 85°C  
Ambient Operating Temperature Range

Device HBM ESD Classification Level 2

Device CDM ESD Classification Level C4A

Two-Input One-Output Power Multiplexer With  
Low  $r_{DS(on)}$  Switch...84 m $\Omega$  (Typical)

Reverse and Cross-Conduction Blocking

Wide Operating Voltage Range...2.8 V to 5.5 V

Low Standby Current...0.5  $\mu$ A (Typical)

Low Operating Current...55  $\mu$ A (Typical)

Adjustable Current Limit

Controlled Output-Voltage Transition Times Limit  
Inrush Current and Minimize Output Voltage Hold-  
Up Capacitance

CMOS- and TTL-Compatible Control Inputs

Manual and Auto-Switching Operating Modes

Thermal Shutdown

Available in TSSOP-8 (PW) Package

## Recommended For You

---

### TPD3S014DBVR

Texas Instruments, Inc

SOT23-6

### TPS2065CDBVR

Texas Instruments, Inc

SOT23-5

### TPS2557DRBT

Texas Instruments, Inc

SON8

### TPS2042BDR

Texas Instruments, Inc

SOP8

### TPS2051BDR

Texas Instruments, Inc

SOP8

### TPL7407LPWR

Texas Instruments, Inc

TSSOP16

### TPS23753APWR

Texas Instruments, Inc

TSSOP14

### TPS2116DRLR

Texas Instruments, Inc

SOT5X3-8

### TPS259460ARPWR

Texas Instruments, Inc

VQFN-10

**TPS23751PWPR**

Texas Instruments, Inc  
HTSSOP16

**TPS65150QPWPRQ1**

Texas Instruments, Inc  
HTSSOP-24

**TPS2410PWR**

Texas Instruments, Inc  
TSSOP-14

**TPS22914BYFPR**

Texas Instruments, Inc  
DSBGA4

**TPS2115ADRBR**

Texas Instruments, Inc  
VSON8

**TPS2113ADRBR**

Texas Instruments, Inc  
SON8