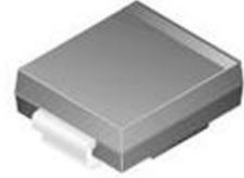


TVS Diode Single Uni-Dir 12V 3KW 2-Pin SMC T/R**Manufacturer:** [Littelfuse Inc](#)**Package/Case:** SMC**Product Type:** Thyristors**Lifecycle:** Active

Images are for reference only

[Inquiry](#)**General Description**

The SMDJ Series is designed specifically to protect sensitive electronic equipment from voltage transients induced by lightning and other transient voltage events.

Key Features

For surface mounted applications in order to optimize board space

Low profile package

Typical failure mode is short from over-specified voltage or current

Whisker test is conducted based on JEDEC JESD201A per its table 4a and 4c

IEC-61000-4-2 ESD 15kV(Air), 8kV (Contact)

ESD protection of data lines in accordance with IEC 61000-4-2 (IEC801-2)

EFT protection of data lines in accordance with IEC 61000-4-4 (IEC801-4)

Built-in strain relief

Typical maximum temperature coefficient $\Delta VBR = 0.1\% \times VBR@25^{\circ}C \times \Delta T$

Glass passivated chip junction

3000W peak pulse power capability at 10×1000μs waveform, repetition rate (duty cycles):0.01%

Fast response time: typically less than 1.0ps from 0V to BV min

Excellent clamping capability

Low incremental surge resistance

Typical IR less than 2μA above 12V

High temperature soldering guaranteed: 260°C/40 seconds at terminals

Plastic package has underwriters laboratory flammability 94V-O

Matte tin lead-free plated

Halogen free and RoHS compliant

Recommended For You

SMAJ12A

Littelfuse Inc

SMA

SMAJ58CA

Littelfuse Inc

SMA

SMBJ22A

Littelfuse Inc

SMB

SMAJ30A

Littelfuse Inc

SMA

SMBJ30A

Littelfuse Inc

SMB

SMAJ24CA

Littelfuse Inc

DO-214AC

SMBJ18A

Littelfuse Inc

SMB

SMBJ24A

Littelfuse Inc

SMB

SMBJ36CA

Littelfuse Inc

SMB

SMAJ12CA

Littelfuse Inc

SMA

SMCJ30CA

Littelfuse Inc

SMC

SMAJ28CA

Littelfuse Inc

SMA

SMBJ26CA

Littelfuse Inc

SMB

SMBJ17A

Littelfuse Inc

SMB

SMBJ20A

Littelfuse Inc

SMB