
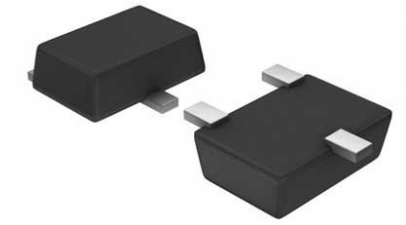


Comparator Single R-R I/P $\pm 18V/36V$ Automotive 5-Pin SOT-23 T/R

Manufacturer:	Texas Instruments, Inc
Package/Case:	SOT23-5
Product Type:	Linear Displacement Sensors
RoHS:	RoHS Compliant/Lead free 
Lifecycle:	Active



Images are for reference only

[Inquiry](#)

General Description

The TLV1701-Q1 (Single), TLV1702-Q1 (Dual) and TLV1704-Q1 (Quad) devices offers a wide supply range, rail-to-rail inputs, low quiescent current, and low propagation delay. All these features come in industry-standard, extremely-small packages, making these devices the best general-purpose comparators available.

The open collector output offers the advantage of allowing the output to be pulled to any voltage rail up to 36 V above the negative power supply, regardless of the TLV170x-Q1 supply voltage.

The device is a microPower comparator. Low input offset voltage, low input bias currents, low supply current, and open-collector configuration make the TLV170x-Q1 device flexible enough to handle almost any application, from simple voltage detection to driving a single relay.

The device is specified for operation across the expanded industrial temperature range of -40°C to $+125^{\circ}\text{C}$.

Key Features

Qualified for Automotive Applications

AEC Q100-Qualified With the Following Results

Device Temperature Grade 1: -40°C to +125°C Ambient Operating Temperature

Device HBM ESD Classification Level 2 (TLV1701-Q1)

Device HBM ESD Classification Level 1C (TLV1702-Q1, TLV1704-Q1)

Device CDM ESD Classification Level C6

Supply Range: 2.2 V to 36 V or ± 1.1 V to ± 18 V

Low Quiescent Current: 55 μ A per Comparator

Input Common-Mode Range Includes Both Rails

Low Propagation Delay: 560 ns

Low Input Offset Voltage: 300 μ V

Open Collector Outputs:

Up to 36 V Above Negative Supply Regardless of Supply Voltage

Industrial Temperature Range: -40°C to +125°C

Small Packages:

Single: SOT23-5 and SC-70-5

Dual: VSSOP-8

Quad: TSSOP-14

Recommended For You

TLC27M2CP

Texas Instruments, Inc

DIP8

TLV3501AIDR

Texas Instruments, Inc

SOP8

TL071ACP

Texas Instruments, Inc

DIP-8

TL062CDR

Texas Instruments, Inc

SOP8

TLE2142IP

Texas Instruments, Inc

DIP8

TLC272AID

Texas Instruments, Inc

SOP-8

TLV3502AQDCNRQ1

Texas Instruments, Inc

SOT23-8

TL084CD

Texas Instruments, Inc

SOP14

TLV2711HDBVR

Texas Instruments, Inc

SOT23-5

TLC074CD

Texas Instruments, Inc

SOP14

TLC2272ACD

Texas Instruments, Inc

SOP-8

TLC2272AIDR

Texas Instruments, Inc

SOP8

TLV2462ID

Texas Instruments, Inc

SOP-8

TLV2471QDBVRQ1

Texas Instruments, Inc

SOT23-5

TLV2381IDBVR

Texas Instruments, Inc

SOT23-5