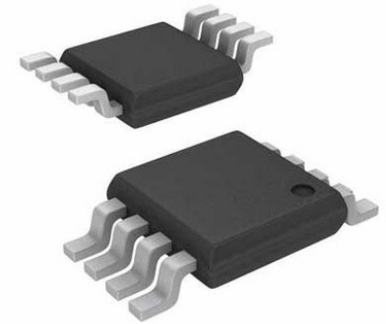


## EEPROM Serial-I2C 1K-bit 128 x 8 3.3V/5V 8-Pin TSSOP T/R



Images are for reference only

[Inquiry](#)

**Manufacturer:** [STMicroelectronics, Inc](#)

**Package/Case:** TSSOP8

**Product Type:** Memory

**RoHS:** RoHS Compliant/Lead free 

**Lifecycle:** NRND

### General Description

The M24C01(C02) is a 1(2)-Kbit I2C-compatible EEPROM (Electrically Erasable PROgrammable Memory) organized as 128 (256) × 8 bits.

The M24C01/02-W can be accessed with a supply voltage from 2.5 V to 5.5 V, the M24C01/02-R can be accessed with a supply voltage from 1.8 V to 5.5 V, and the M24C02-F can be accessed either with a supply voltage from 1.7 V to 5.5 V (over the full temperature range) or with an extended supply voltage from 1.6 V to 1.7 V if the temperature is reduced to 0 °C/ 85

## Key Features

Compatible with I2C bus modes:

400kHz

100kHz

Memory array:

1Kbit (128 bytes) of EEPROM

2Kbit (256 bytes) of EEPROM

Page size: 16 byte

Single supply voltage:

M24C01/02-W: 2.5V to 5.5V

M24C01/02-R: 1.8V to 5.5V

M24C02-F: 1.7V to 5.5V (full temperature range) and 1.6V to 1.7V (limited temperature range)

Write:

Byte Write within 5ms

Page Write within 5ms

Operating temperature range:

from -40°C up to +85°C

Random and sequential Read modes

## Recommended For You

---

### M24C08-RMN6TP

STMicroelectronics, Inc

SOP8

### M24C08-WMN6TP

STMicroelectronics, Inc

SOP8

### M27C64A-15F1

STMicroelectronics, Inc

DIP

### M24C08-WDW6TP

STMicroelectronics, Inc

TSSOP8

### M24C02-RMN6P

STMicroelectronics, Inc

SOP-8

### M27C1001-10F1

STMicroelectronics, Inc

CDIP32

### M27C1001-12F6

STMicroelectronics, Inc

DIP

### M27C64A-20F1

STMicroelectronics, Inc

DIP

### M27C512-15F1

STMicroelectronics, Inc

CDIP

**M24C02-RMN6TP**

STMicroelectronics, Inc  
SOP-8

**M27C1001-70F1**

STMicroelectronics, Inc  
DIP

**M24C32-WMN6TP**

STMicroelectronics, Inc  
SOP-8

**M27C512-90B6**

STMicroelectronics, Inc  
DIP28

**M27C4001-90C6**

STMicroelectronics, Inc  
PLCC-32

**M27C1001-70C1**

STMicroelectronics, Inc  
PLCC32