
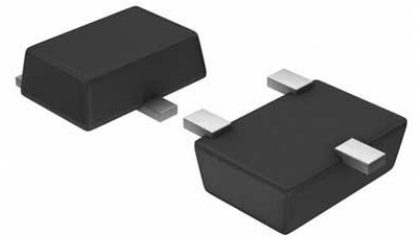


## Comparator Single R-R I/P 5V Automotive 5-Pin SOT-23 T/R

<b>Manufacturer:</b>	STMicroelectronics, Inc
<b>Package/Case:</b>	SOT23-5
<b>Product Type:</b>	Linear Displacement Sensors
<b>RoHS:</b>	RoHS Compliant/Lead free 
<b>Lifecycle:</b>	Active



Images are for reference only

[Inquiry](#)

### General Description

The TS3021 single comparator features high-speed response time with rail-to-rail inputs. With a supply voltage specified from 2 to 5 V, this comparator can operate over a wide temperature range: -40 °C to 125 °C.

The TS3021 comparator offers micropower consumption as low as a few tens of microamperes thus providing an excellent ratio of power consumption current versus response time. The TS3021 includes push-pull outputs and is available in small packages (SOT23-5 and SC70-5).

### Key Features

Propagationdelay:38ns

Lowcurrentconsumption:73μA

Rail-to-railinputs

Push-pulloutputs

Supplyoperationfrom1.8to5V

Widetemperaturerange:-40°Cto125°C

HighESDtolerance:5kVHBM,300VMM

Latch-upimmunity:200mA

SMDpackages

Automotivequalification

### Recommended For You

**TS3021HLT**

STMicroelectronics, Inc  
SOT23-5

**TS391HLT**

STMicroelectronics, Inc  
SOT23-5

**TS912AIDT**

STMicroelectronics, Inc  
SOP-8

**TSZ121HLT**

STMicroelectronics, Inc  
SOT23-5

**TS3702CDT**

STMicroelectronics, Inc  
SOP-8

**TSX3702IQ2T**

STMicroelectronics, Inc  
DFN-8

**TS881HLT**

STMicroelectronics, Inc  
SOT23-5

**TSV992IYDT**

STMicroelectronics, Inc  
SOP8

**TS3022IYST**

STMicroelectronics, Inc  
MiniSO-8

**TS507CLT**

STMicroelectronics, Inc  
SOT23-5

**TS339IPT**

STMicroelectronics, Inc  
TSSOP14

**TSC103IPT**

STMicroelectronics, Inc  
TSSOP-8

**TSC2010HYDT**

STMicroelectronics, Inc  
SOIC-8

**TS3021HIYLT**

STMicroelectronics, Inc  
SOT23-5

**TS972IDT**

STMicroelectronics, Inc  
SOP-8