

# Smart Configurator

## Guide on Sample Projects for RH850/F1KH-D8 Devices

### Introduction

This document describes how to use the sample project of Smart Configurator for RH850/F1KH-D8 devices in CS+ integrated development environment.

### Target Device

RH850/F1KH-D8 (BGA324, BGA233, QFP176)

### Contents

1. Overview .....	2
1.1 Purpose .....	2
1.2 Operating Environment .....	2
2. Outline of the Sample Projects .....	3
2.1 Introduction of Sample Project .....	3
2.2 Notes on the Sample Projects .....	3
3. Basic Procedures for Operating the Smart Configurator .....	4
4. Description of the Sample Project .....	5
4.1 Configuration of the Sample Project .....	5
4.2 Basic Operating Procedure .....	6
4.3 Procedure for Changing the Device .....	9
4.4 Settings in the Sample Project .....	11
5. Operations in the Smart Configurator .....	13
5.1 Setting the Peripheral Modules (Software Components) .....	13
5.2 Generating Drivers .....	17
5.3 Adding the Code to the User Code Area .....	18
5.4 Adding the Code to main() .....	19

## 1. Overview

### 1.1 Purpose

This document describes how to use the sample project of Smart Configurator for RH850/F1KH-D8 devices in CS+ integrated development environment.

When applying this application note to a microcontroller, change the contents according to the specifications of the microcontroller you are using and validate the correct operation of the sample projects.

### 1.2 Operating Environment

Install the Smart Configurator and tools to be used to create or build programs in CS+ based on the source files generated by the Smart Configurator with the use of the sample projects.

For details on how to use your integrated development environment, refer to the user's manual for the integrated development environment that you are using.

**Table 1-1 Operating Environment**

Type	Name	Abbreviation in This Manual
IDE	CS+ for CC V7.00.00 or later	CS+
Toolchain	C Compiler Package for RH850 Family	CCRH

## 2. Outline of the Sample Projects

The Smart Configurator for RH850/F1KH-D8 devices outputs a main function and source files that initialize peripheral modules that are set by components of the Smart Configurator. But it does not output the initialization codes to be performed before the execution of the main function and the startup routine which starts the main function and handles some other processing after the microcontroller has been reset.

This sample project includes boot program and startup code as a reference so that the user application codes and the peripheral modules codes generated according to the configurations in the Smart Configurator can be built and downloaded to the debug tool immediately.

### 2.1 Introduction of Sample Project

RH850/F1KH-D8 sample project starts default CPU(PE1) after microcontroller has been reset.

The sample project take "Interval Timer" as a sample and provide practical applications.

For details on the sample projects, see the descriptions in the relevant sections

### 2.2 Notes on the Sample Projects

1. When using this sample project, please copy and use it in a directory that does not restrict access. If you use it in a directory that restricts access, the generated codes and other files will not be saved and some errors may occur.  
In general, the following directories require administrator permission:
  - Program files folder (e.g. "C:\Program Files", "C:\Program Files (x86)")
  - System root folder (e.g. "C:\Windows")For your environment, please contact your system administrator(IT department).
2. The Smart Configurator outputs the register descriptors according to iodef.h for the Renesas CCRH compiler. iodef.h for the Renesas CCRH compiler has been included in sample project. This file is used for building files generated by the Smart Configurator.
3. The Smart Configurator uses interrupts with the table lookup method as the method for selecting the interrupt handler addresses. The address where the table starts is set as 0x00020000 in the sample projects.
4. The definition of the interrupt vector table of peripheral modules that was set in the Smart Configurator is reflected in smc/general/r\_cg\_intvector.c, which is output by the Smart Configurator. The file sc\_intprg-D8.c in the "intprg" folder defines the vector table of EI maskable interrupt sources, which is the default EI vector table, is not set by the Smart Configurator.
5. Settings of files and sections in the sample projects are examples. You should change or create the settings newly to match the specifications of the microcontroller used in your system.

### 3. Basic Procedures for Operating the Smart Configurator

This section describes the basic operating procedures when building a user application with the files output from the Smart Configurator for RH850/F1KH-D8 devices.

The basic operating procedure in CS+ environment without using the sample projects is described here. For the operating procedure with using a sample project, see the relevant section 4 “Description of the Sample Project”.

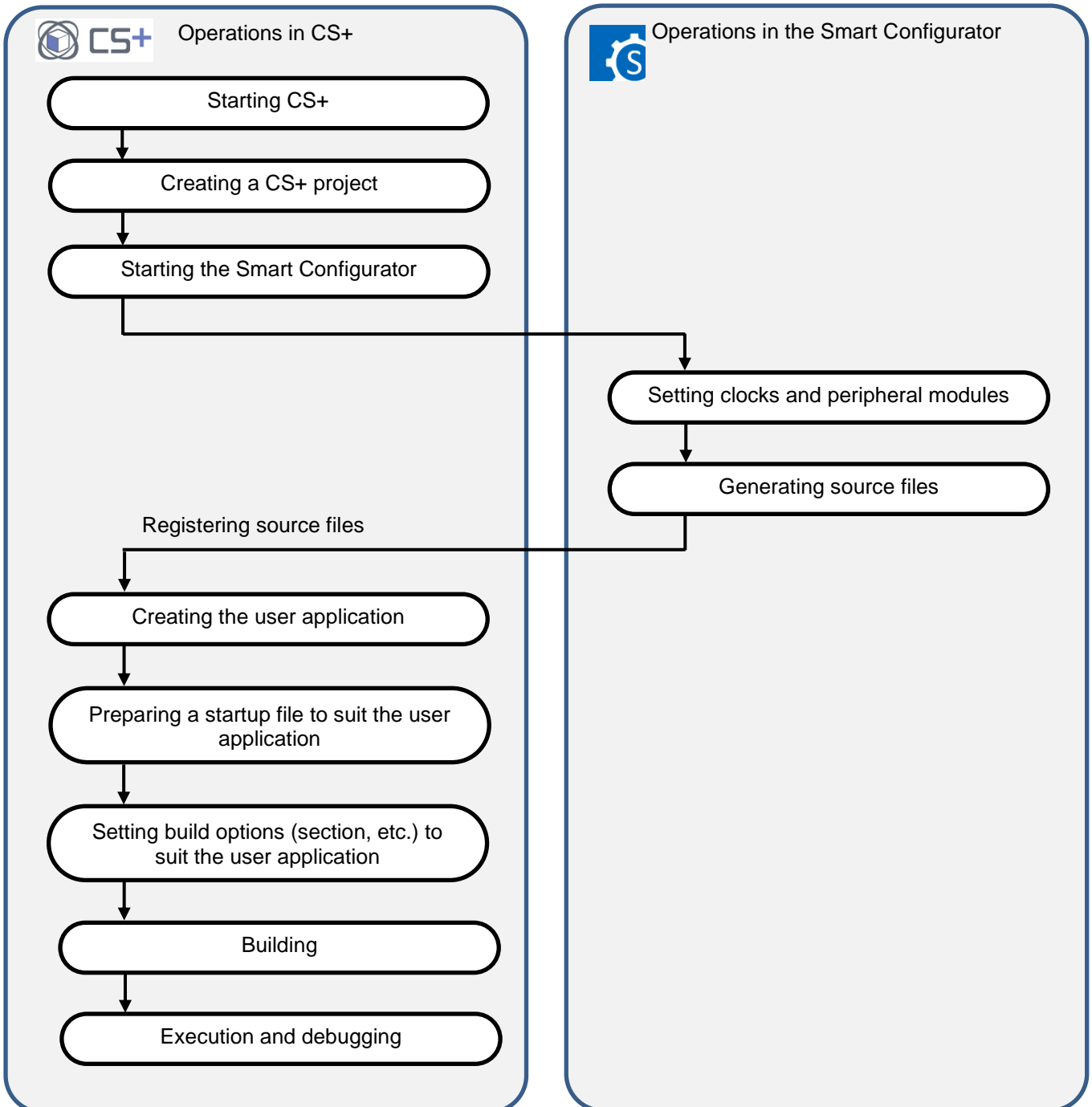
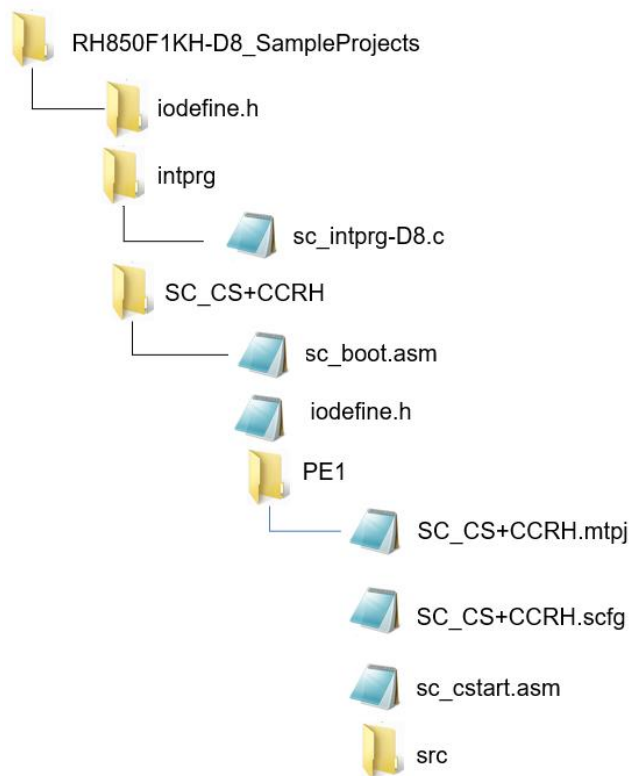


Figure 3-1. Basic Operating Procedure without using Sample Project

## 4. Description of the Sample Project

### 4.1 Configuration of the Sample Project

Figure 4-1 and Table 4-1 describes common folders and what files are included in the main project:



**Figure 4-1. Project folder and files**

**Table 4-1. File Configuration of the main Project (corresponding to Figure 4-1)**

File Name	Outline of File
iodefine.h folder	Folder which includes iodefine.h file
intprg folder	Folder which includes sc_intprg-D8.c file. This file defines default interrupt functions that are used by the EI maskable interrupt vector table for RH850/F1KH-D8 devices and should be included into SC project
SC_CS+CCRH folder	Folder which includes all files belonging to CS+ project
sc_boot.asm	Definition of the procedure from a reset to branching to the startup routine in sc_cstart.asm.
iodefine.h	Renesas CCRH header file that defines the registers for RH850/F1KH-D8 devices
PE1 folder	Folder which includes files belonging to default CPU(PE1)
SC_CS+CCRH.mtpj	Project file for CS+
SC_CS+CCRH.scfg	Smart Configurator project file
sc_cstart.asm	Definition of the startup routine which is called by sc_boot.asm and is executed until branching to the main() function
src folder	Folder which includes device code generated by Smart Configurator

NOTE: The Smart Configurator does not output the above files except for folder “src” and file “SC\_CS+CCRH.scfg”

## 4.2 Basic Operating Procedure

Figure 4-2 shows the operating procedure in CS+ environment when using the sample project.

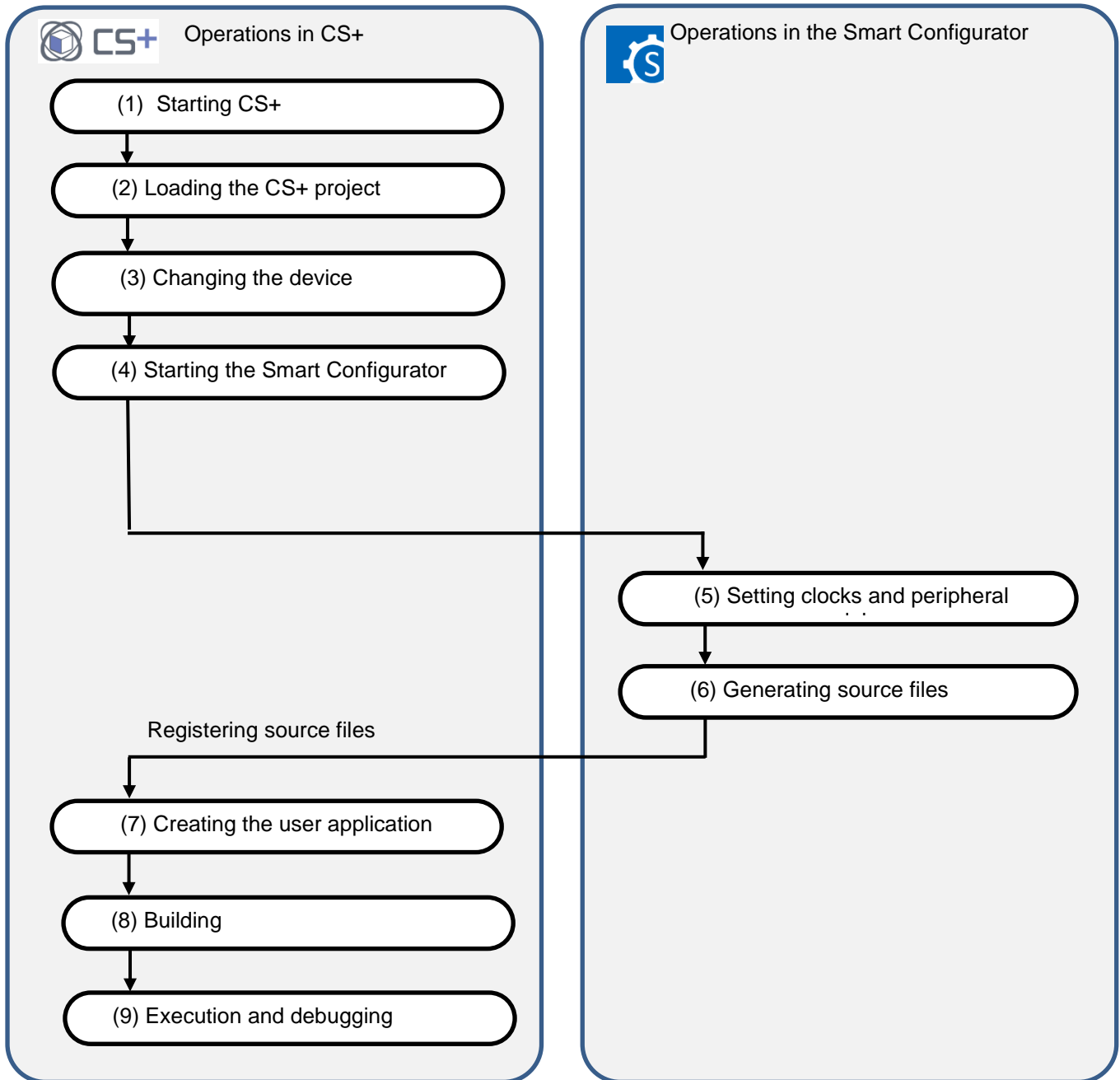


Figure 4-2. Operating Procedure for Sample Project

## (1) Starting CS+

In the [Start] menu of Windows, select [Renesas Electronics CS+] → [CS+ for CC(RL78,RX,RH850)].

## (2) Loading the CS+ sample project

From the [Open...] item of the [File] menu or [Open Existing Project] of CS+, select "SC\_CS+CCRH.mtpj".

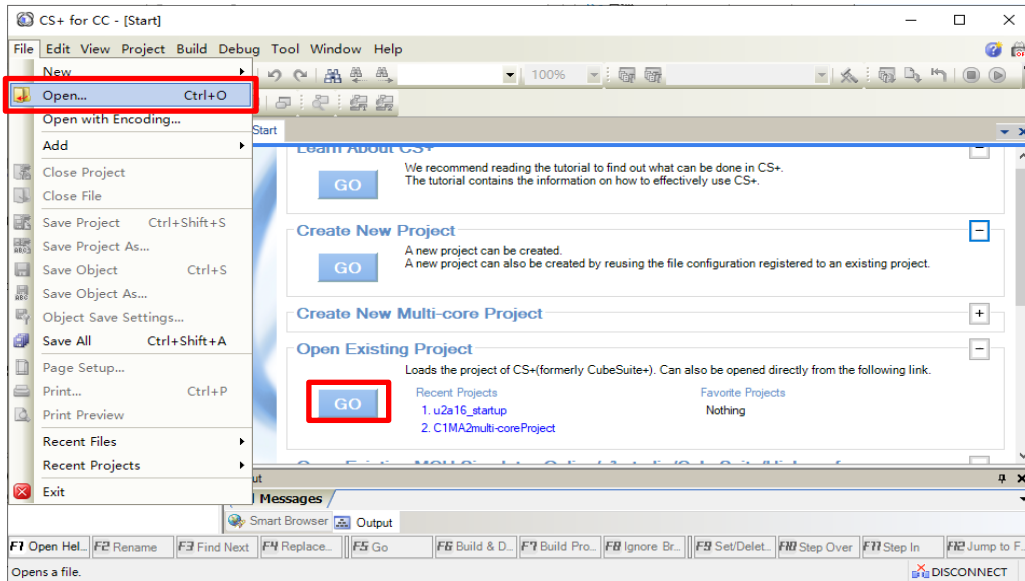


Figure 4-3. Loading the CS+ Sample Project

NOTE: Sample project has to be copied to a directory that does not restrict access before using. Please refer [2.2-1](#) for the detail.

## (3) Changing the device

The R7F701709 (RH850/F1KH-D8) is selected as the target device in the sample project. If you are using another device, change the target device and file to be used with reference to section 4.3, "Procedure for Changing the Device". If the device does not require a change, proceed to step (4).

## (4) Starting the Smart Configurator

(a) Confirm the setting of the path for the Smart Configurator for RH850. In the Project Tree panel, select [Smart Configurator (Design Tool)] and open the [Property] panel. Confirm that the path in which the Smart Configurator for RH850 was installed is set in [Smart Configurator for RH850 executable file path].

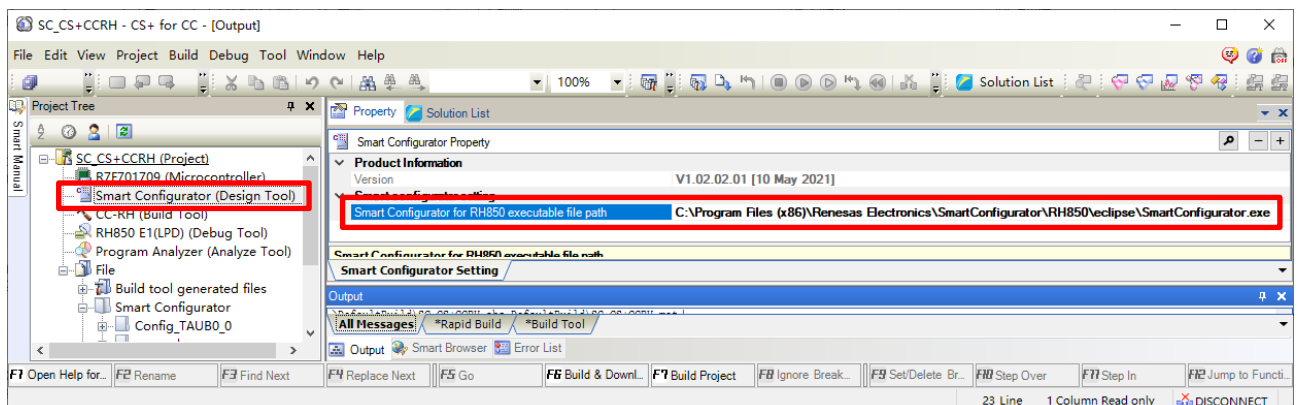


Figure 4-4. Setting the path for Smart Configurator

- (b) Start the Smart Configurator for RH850 by double-clicking on [Smart Configurator (Design Tool)] in the Project Tree panel.
- (5) Smart Configurator setting - Clocks
- (6) Smart Configurator setting - Components
- (7) Smart Configurator setting - Generating code
- Above (5) ~ (7) are the procedures for setting clocks and components and generating a driver in the Smart Configurator, please see section 5 "Operations in the Smart Configurator".

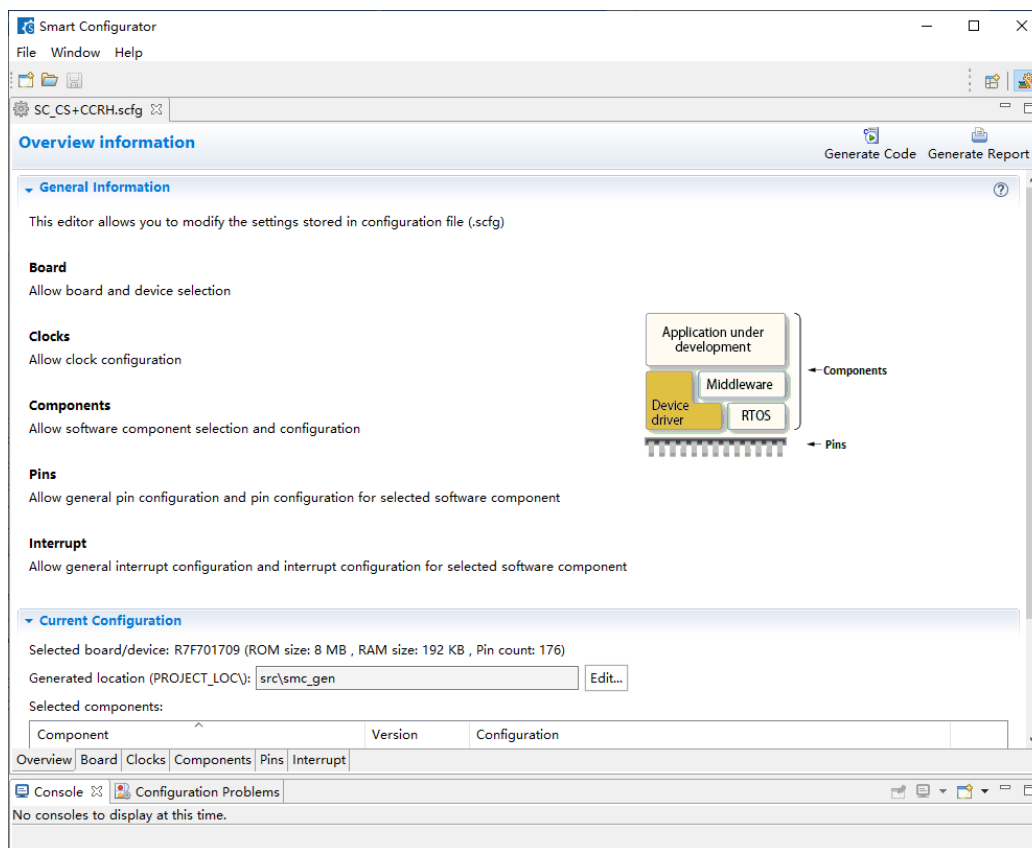


Figure 4-5. Smart Configurator setting

(8) Building

Build the driver and application code. Select [Build Project] from the [Build] menu or click on the [Builds the project. (F7)] button in the toolbar of CS+.

(9) Execution and debugging

For program execution and debugging in the emulator, refer to CS+ V8.06.00 Integrated Development Environment User's Manual: RH850 Debug Tool (R20UT4978).



### 4.3 Procedure for Changing the Device

When the target device of the sample project differs from the device that is to be used, the target device or file to be used must be changed according to the following procedure.

(1) Changing the microcontroller

- (a) Select "R7F701709 (Microcontroller)" of main project "SC\_CS+CCRH.mtpj" and then select [Change Microcontroller...] from the context menu.

Click on the [OK] button in the [Question] dialog box that appears.

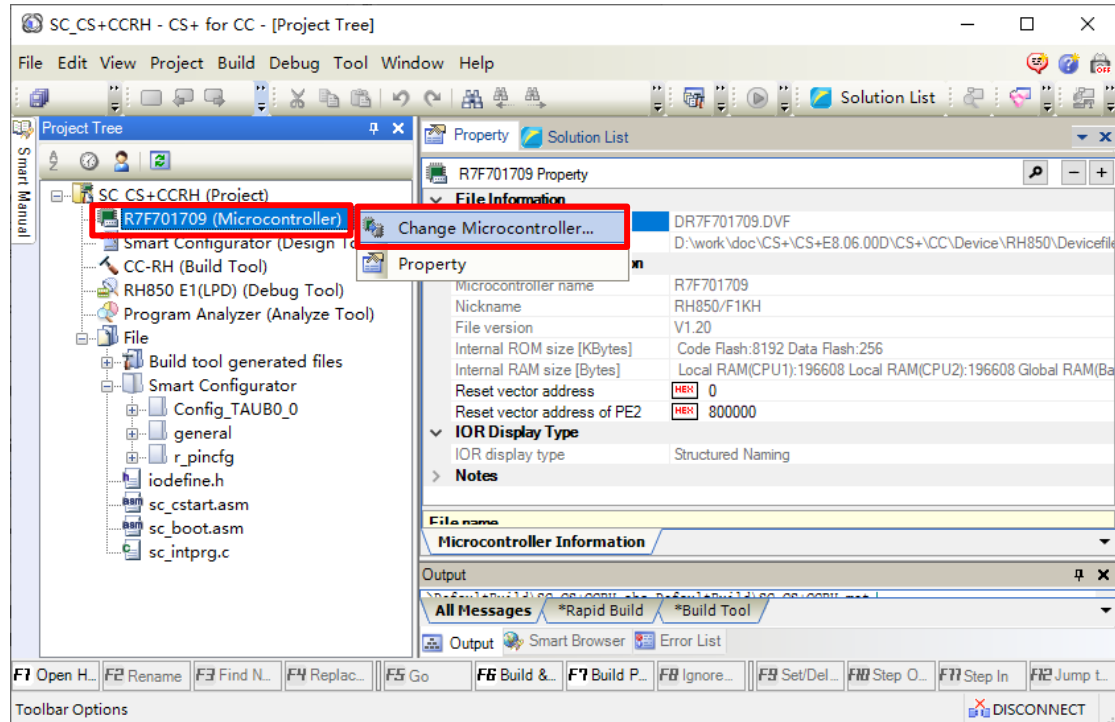


Figure 4-7. Change Microcontroller

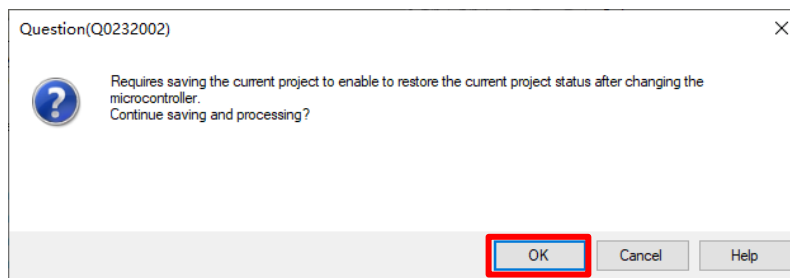


Figure 4-8. Save and continue

- (b) In the [Change Microcontroller] dialog box, select the RH850/F1KH-D8 device to be used.  
Example: Changing from R7F701709 to R7F701710

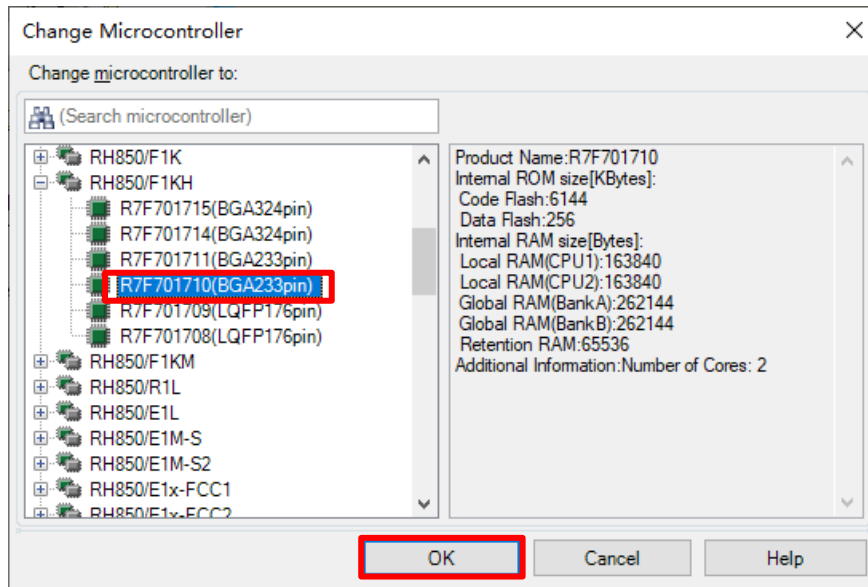


Figure 4-9. Select device to be changed

- (c) Confirm that the microcontroller displayed in the Project Tree panel has become the device to be used after the change.

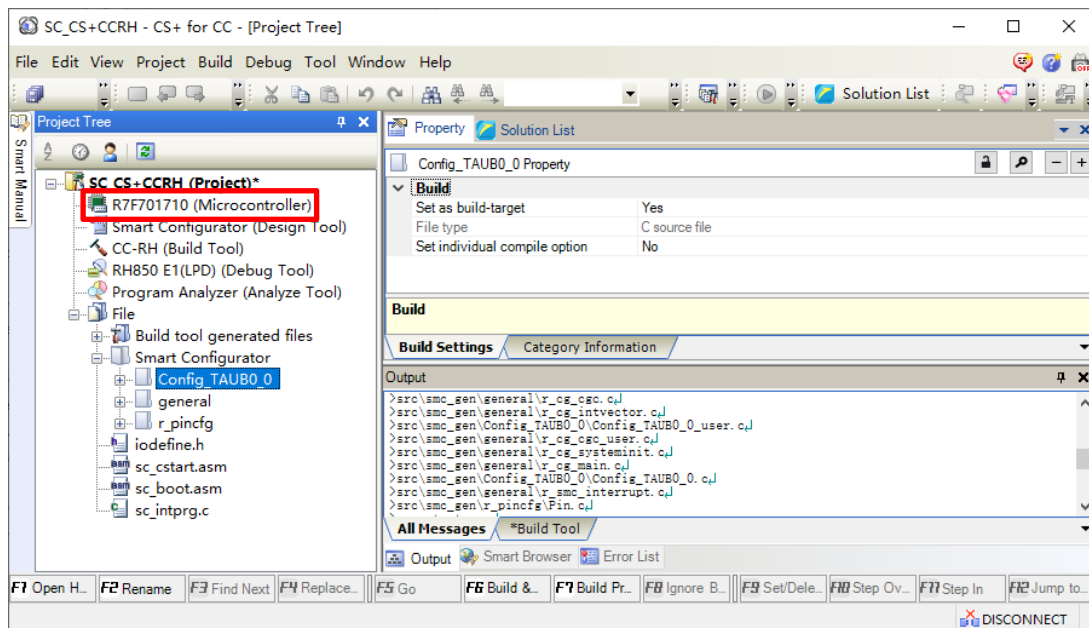


Figure 4-10. Confirm microcontrollers are changed

- (d) Save the project by selecting [Save Project] from the [File] menu.

### 4.4 Settings in the Sample Project

The sample project is created in CS+ as an [Application for Multi-core (CC-RH)] project. The include path is added and the settings of the following options are changed.

- (1) [Property] panel from [CC-RH (Build Tool)] → [Link Options] tab → [Section] → [Section start address]

Settings in the sample project:

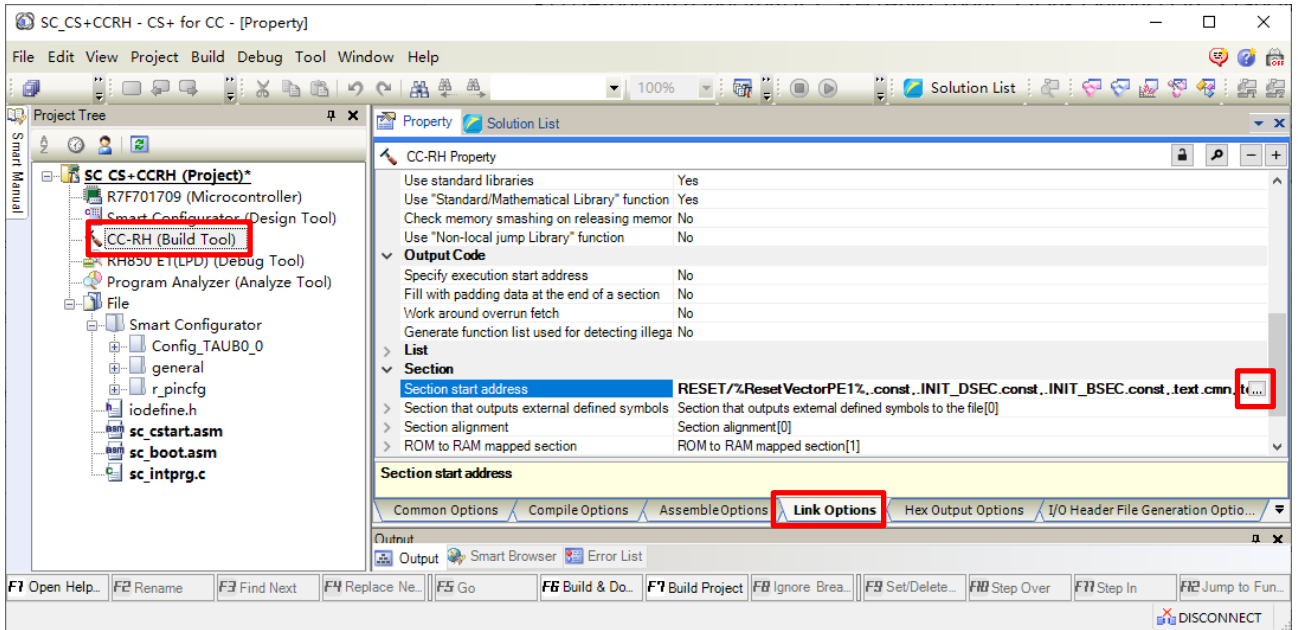


Figure 4-11. Link options setting

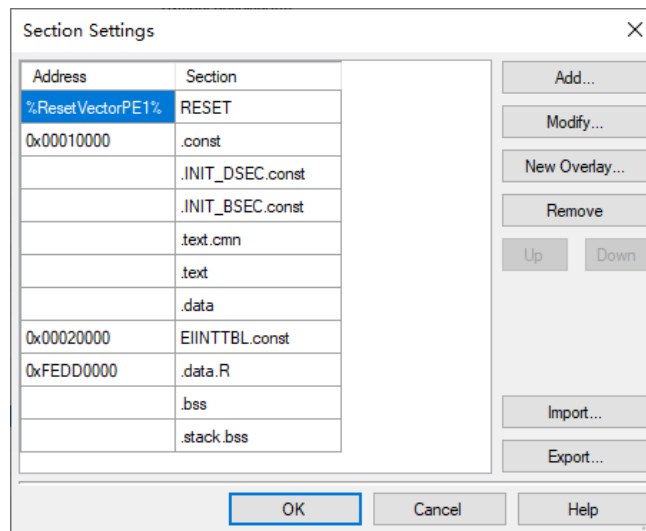


Figure 4-12. Setting in the sample project

- (2) [Property] panel from [CC-RH (Build Tool)] → [I/O Header File Generation Options] tab → [I/O Header File] → [Update I/O header file on build]

Settings in the sample project:

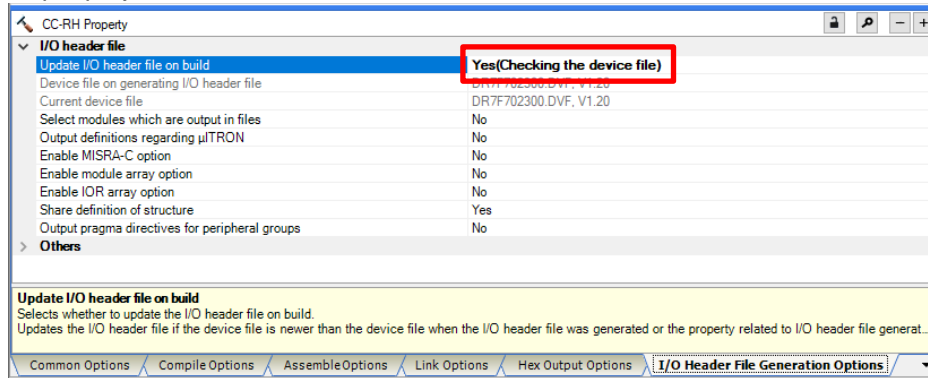


Figure 4-13. Setting in the sample project

- (3) [Property] panel from [RH850 E1(LPD)(Debug Tool)] [Connection settings] tab [Clock] [Main clock frequency[MHz]]  
 [Property] panel from [RH850 E1(LPD)(Debug Tool)] → [Connection settings] tab → [Connection with Target Board] → [Power target from the emulator.(MAX 200mA)]  
 [Property] panel from [RH850 E1(LPD)(Debug Tool)] → [Connection settings] tab → [Connection with Target Board] → [Supply voltage[V]]

Settings in the sample project:

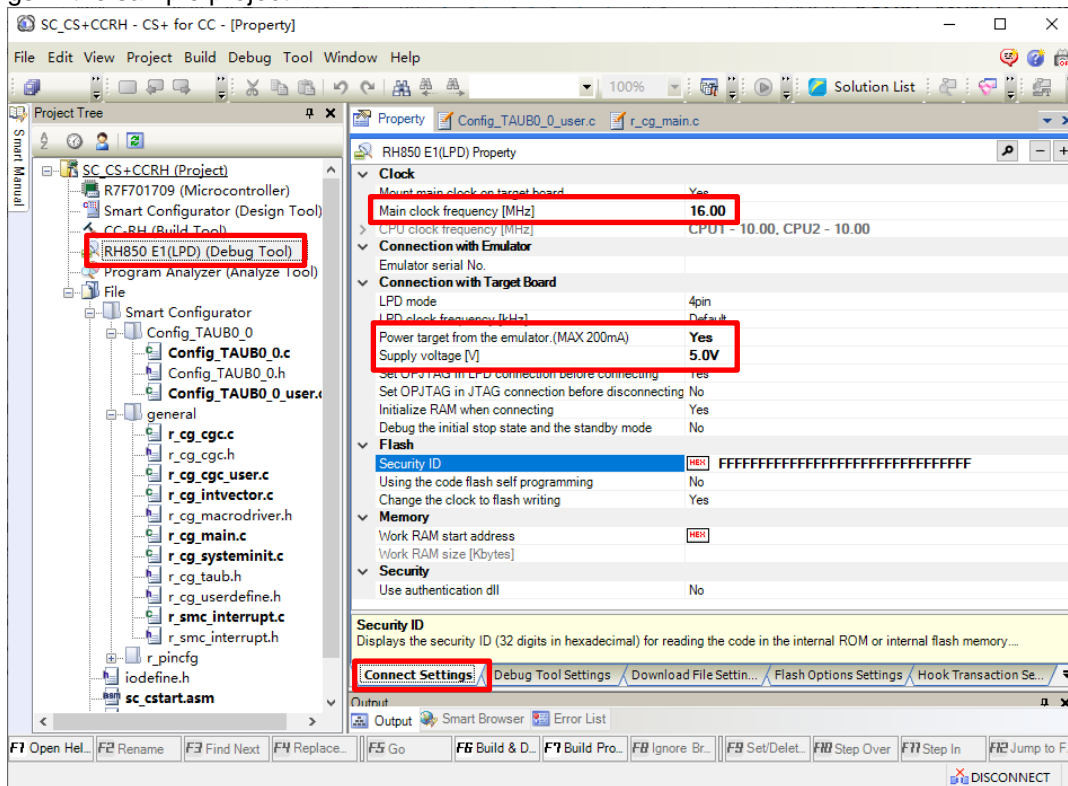


Figure 4-14. Connect Settings in the sample project

## 5. Operations in the Smart Configurator

This section gives an overview of setting the drivers of peripheral modules of the device and handling of the Smart Configurator for the generation of code.

For details, refer to Smart Configurator User's Guide: CS+ (R20AN0470).

### 5.1 Setting the Peripheral Modules (Software Components)

(1) Configure the clocks of the device on the [Clocks] tab page.

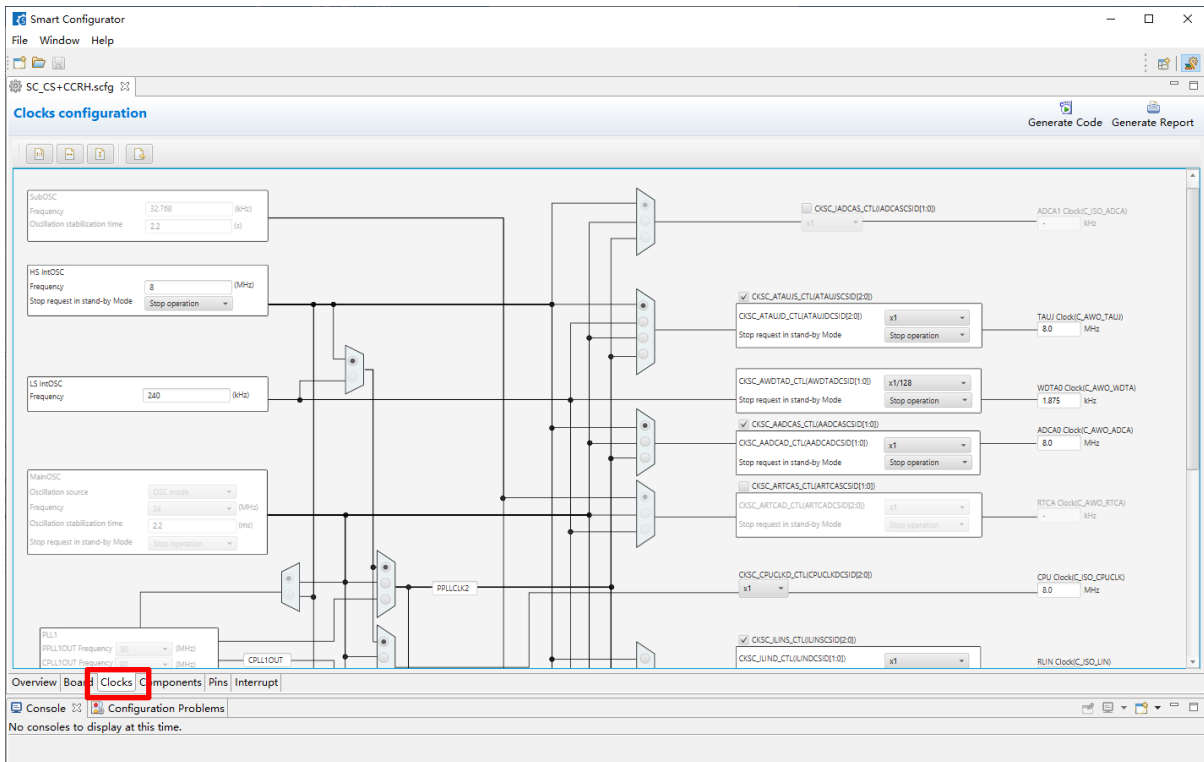


Figure 5-1. Configure clock

- (2) Add or set the peripheral modules of the device on the [Components] tab page. The peripheral modules are set as software components. Click on the [Add component] icon.

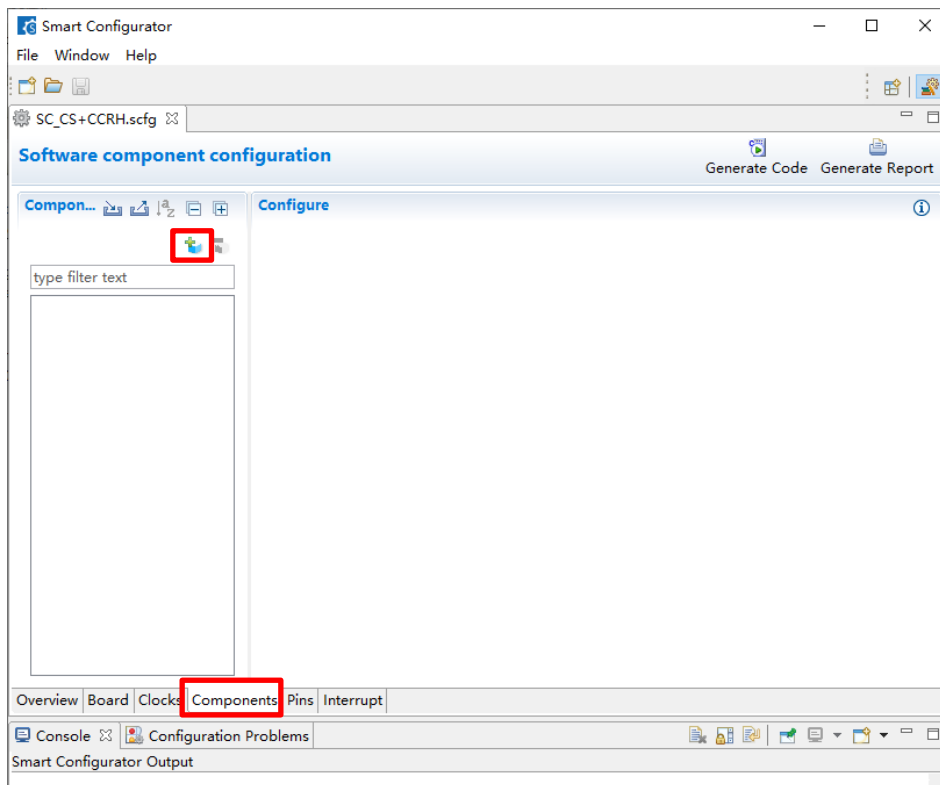


Figure 5-2. Add modules

- (3) Select components on the [Software Component Selection] page of the [New Component] dialog box. Select each component to be used from the list and click on the [Next] button.

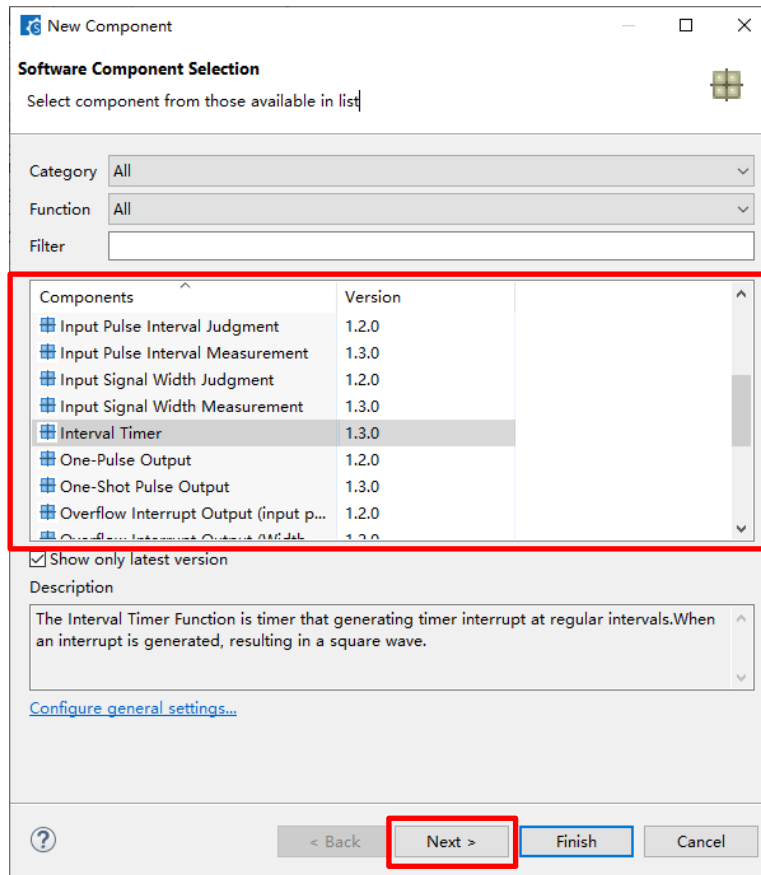


Figure 5-3. Select components

- (4) Select the configuration name and resource of the selected component. On the [Add new configuration for selected component] page of the [New Component] dialog box, enter an appropriate configuration name or use the default name. Select the resource or use the default resource. After you have made the selections, click on the [Finish] button.

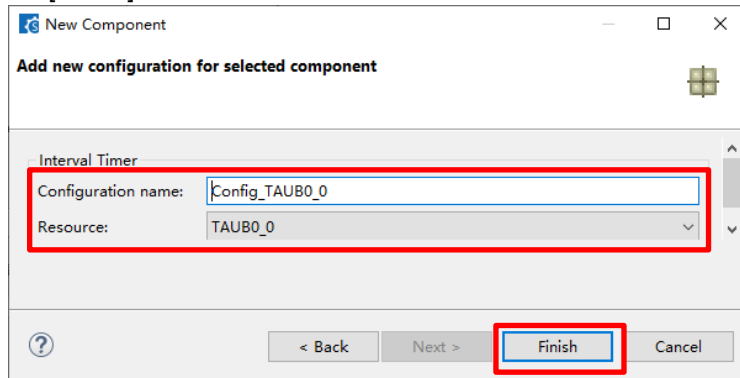


Figure 5-4. Input Configuration name and select Resource

- (5) Set the configuration of the component. Click on the configuration icon in the Component Tree panel and make detailed settings in the right-hand panel.

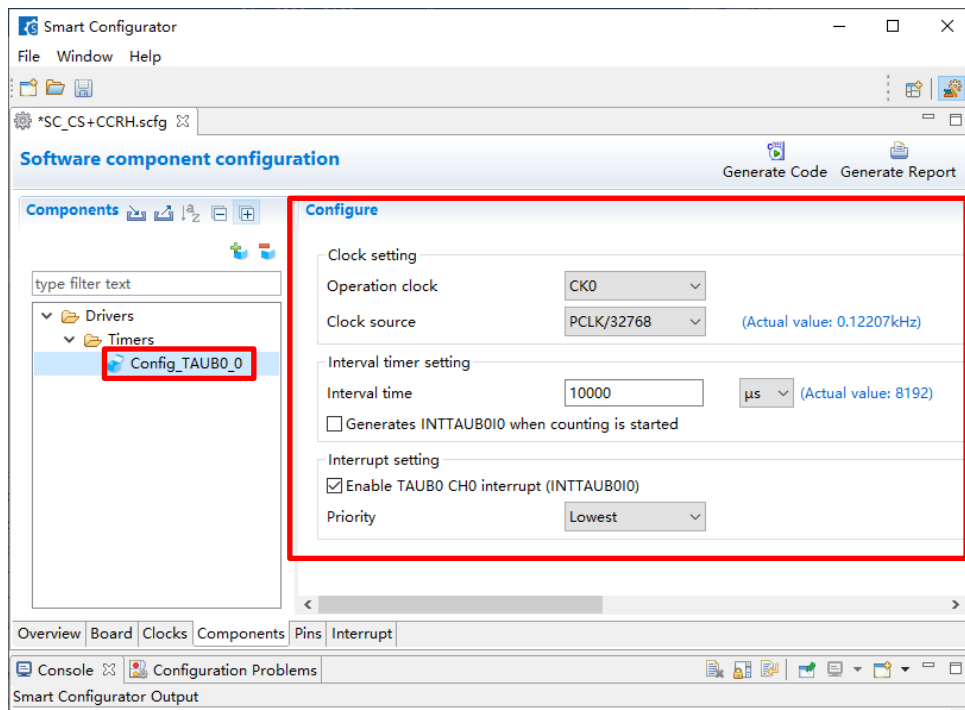



Figure 5-5. Set component configuration

- (6) Repeat steps (2) to (5) for each component that you intend to use.



## 5.2 Generating Drivers

Click on the [Code Generator] button  to generate code. The source files generated by the Smart Configurator are stored in the <ProjectDir>\src\smc\_gen folder.

<ProjectDir> is the folder containing the project files (.scfg) for the Smart Configurator.

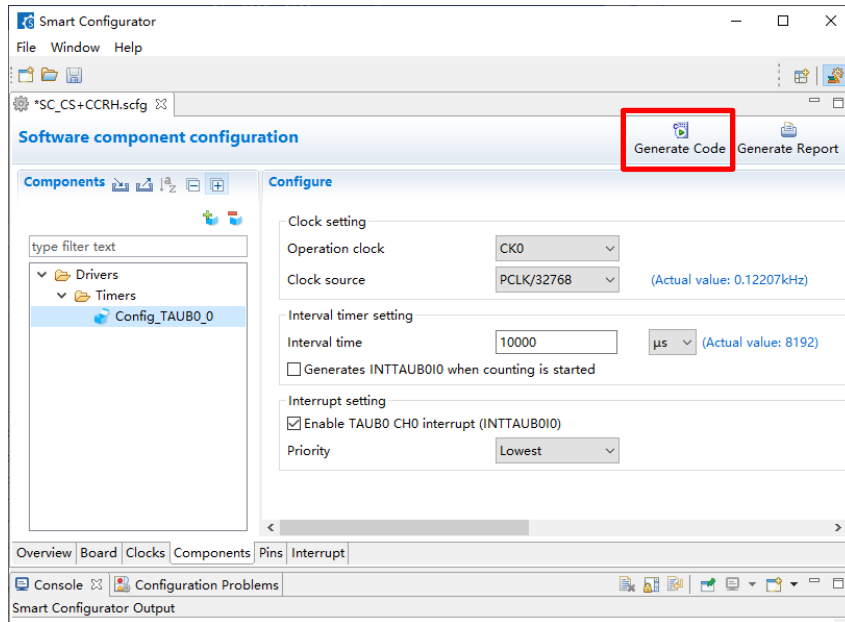


Figure 5-6. Generating code

### 5.3 Adding the Code to the User Code Area

Some generated source files have a user code area for the writing of user code. Open such files in an editor from CS+ environment that you are using and add the code (e.g. code for interrupt processing) to the user code areas as necessary.

Example: File generated for the interval timer component

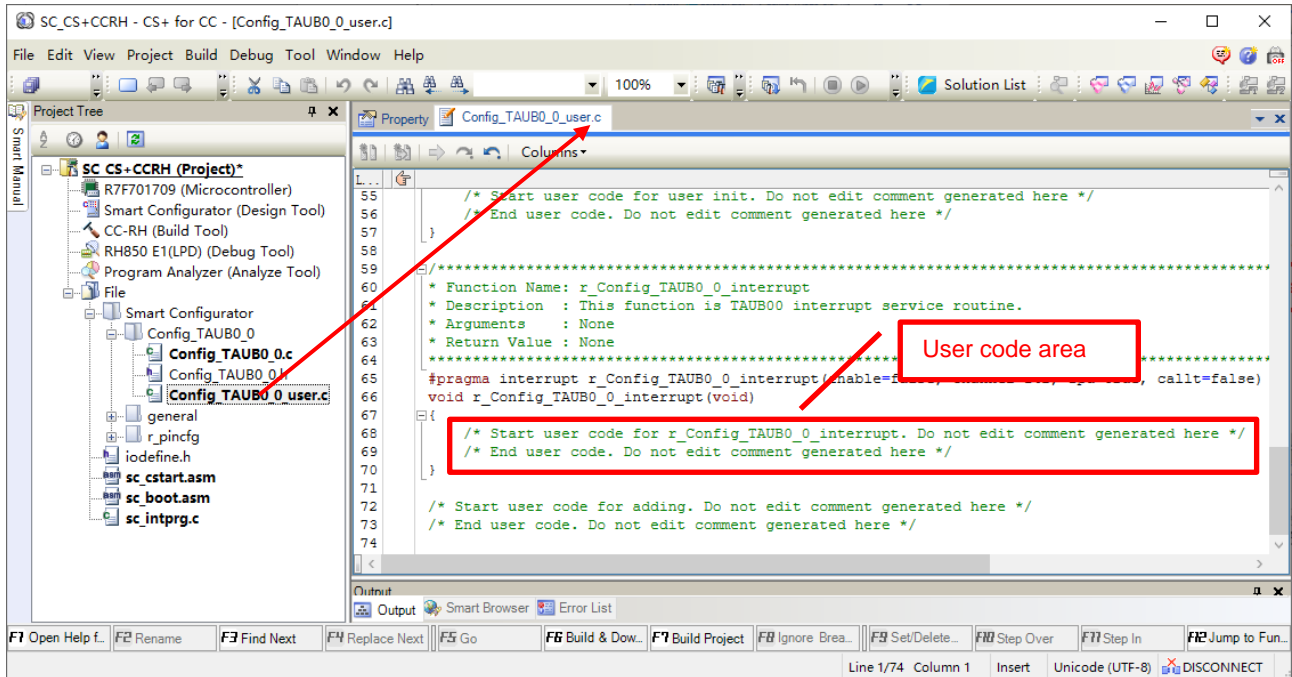


Figure 5-7. Add user code to the user code area of interrupt routine

### 5.4 Adding the Code to main()

The main function is in "<ProjectDir>\src\smc\_gen\general\r\_cg\_main.c". Open the file in an editor from CS+ environment that you are using and add the code to the user code area.

Example: Add code to the main() function.

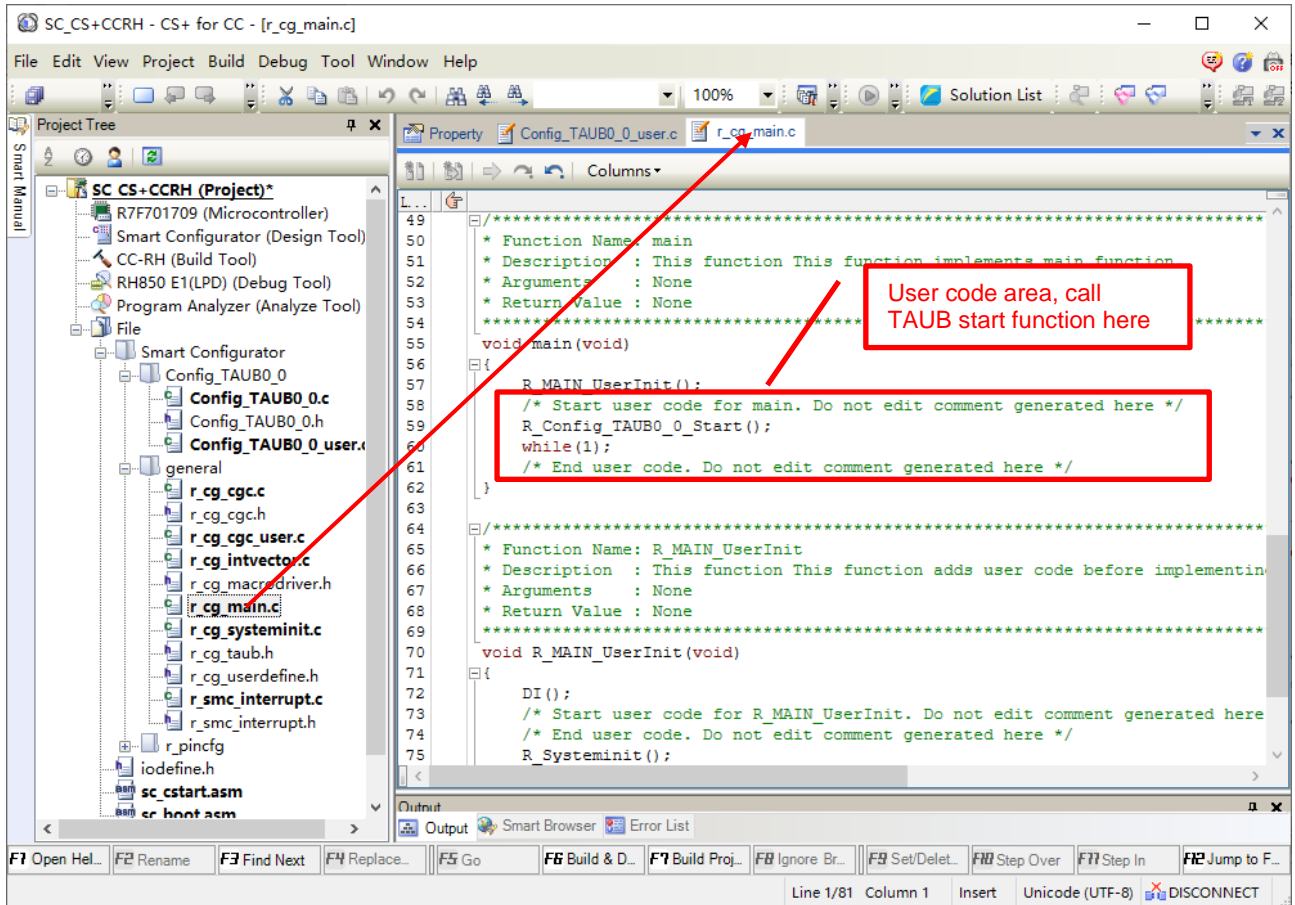


Figure 5-8. Add user code to main function

**Revision History**

Rev.	Date	Description	
		Page	Summary
1.00	Nov.22.21	All	New version
1.01	Jan.06.22	3	Added new note No.1.

# General Precautions in the Handling of Microprocessing Unit and Microcontroller Unit Products

The following usage notes are applicable to all Microprocessing unit and Microcontroller unit products from Renesas. For detailed usage notes on the products covered by this document, refer to the relevant sections of the document as well as any technical updates that have been issued for the products.

## 1. Precaution against Electrostatic Discharge (ESD)

A strong electrical field, when exposed to a CMOS device, can cause destruction of the gate oxide and ultimately degrade the device operation. Steps must be taken to stop the generation of static electricity as much as possible, and quickly dissipate it when it occurs. Environmental control must be adequate. When it is dry, a humidifier should be used. This is recommended to avoid using insulators that can easily build up static electricity.

Semiconductor devices must be stored and transported in an anti-static container, static shielding bag or conductive material. All test and measurement tools including work benches and floors must be grounded. The operator must also be grounded using a wrist strap. Semiconductor devices must not be touched with bare hands. Similar precautions must be taken for printed circuit boards with mounted semiconductor devices.

## 2. Processing at power-on

The state of the product is undefined at the time when power is supplied. The states of internal circuits in the LSI are indeterminate and the states of register settings and pins are undefined at the time when power is supplied. In a finished product where the reset signal is applied to the external reset pin, the states of pins are not guaranteed from the time when power is supplied until the reset process is completed. In a similar way, the states of pins in a product that is reset by an on-chip power-on reset function are not guaranteed from the time when power is supplied until the power reaches the level at which resetting is specified.

## 3. Input of signal during power-off state

Do not input signals or an I/O pull-up power supply while the device is powered off. The current injection that results from input of such a signal or I/O pull-up power supply may cause malfunction and the abnormal current that passes in the device at this time may cause degradation of internal elements. Follow the guideline for input signal during power-off state as described in your product documentation.

## 4. Handling of unused pins

Handle unused pins in accordance with the directions given under handling of unused pins in the manual. The input pins of CMOS products are generally in the high-impedance state. In operation with an unused pin in the open-circuit state, extra electromagnetic noise is induced in the vicinity of the LSI, an associated shoot-through current flows internally, and malfunctions occur due to the false recognition of the pin state as an input signal become possible.

## 5. Clock signals

After applying a reset, only release the reset line after the operating clock signal becomes stable. When switching the clock signal during program execution, wait until the target clock signal is stabilized. When the clock signal is generated with an external resonator or from an external oscillator during a reset, ensure that the reset line is only released after full stabilization of the clock signal. Additionally, when switching to a clock signal produced with an external resonator or by an external oscillator while program execution is in progress, wait until the target clock signal is stable.

## 6. Voltage application waveform at input pin

Waveform distortion due to input noise or a reflected wave may cause malfunction. If the input of the CMOS device stays in the area between  $V_{IL}$  (Max.) and  $V_{IH}$  (Min.) due to noise, for example, the device may malfunction. Take care to prevent chattering noise from entering the device when the input level is fixed, and also in the transition period when the input level passes through the area between  $V_{IL}$  (Max.) and  $V_{IH}$  (Min.).

## 7. Prohibition of access to reserved addresses

Access to reserved addresses is prohibited. The reserved addresses are provided for possible future expansion of functions. Do not access these addresses as the correct operation of the LSI is not guaranteed.

## 8. Differences between products

Before changing from one product to another, for example to a product with a different part number, confirm that the change will not lead to problems. The characteristics of a microprocessing unit or microcontroller unit products in the same group but having a different part number might differ in terms of internal memory capacity, layout pattern, and other factors, which can affect the ranges of electrical characteristics, such as characteristic values, operating margins, immunity to noise, and amount of radiated noise. When changing to a product with a different part number, implement a system-evaluation test for the given product.

## Notice

1. Descriptions of circuits, software and other related information in this document are provided only to illustrate the operation of semiconductor products and application examples. You are fully responsible for the incorporation or any other use of the circuits, software, and information in the design of your product or system. Renesas Electronics disclaims any and all liability for any losses and damages incurred by you or third parties arising from the use of these circuits, software, or information.
2. Renesas Electronics hereby expressly disclaims any warranties against and liability for infringement or any other claims involving patents, copyrights, or other intellectual property rights of third parties, by or arising from the use of Renesas Electronics products or technical information described in this document, including but not limited to, the product data, drawings, charts, programs, algorithms, and application examples.
3. No license, express, implied or otherwise, is granted hereby under any patents, copyrights or other intellectual property rights of Renesas Electronics or others.
4. You shall be responsible for determining what licenses are required from any third parties, and obtaining such licenses for the lawful import, export, manufacture, sales, utilization, distribution or other disposal of any products incorporating Renesas Electronics products, if required.
5. You shall not alter, modify, copy, or reverse engineer any Renesas Electronics product, whether in whole or in part. Renesas Electronics disclaims any and all liability for any losses or damages incurred by you or third parties arising from such alteration, modification, copying or reverse engineering.
6. Renesas Electronics products are classified according to the following two quality grades: "Standard" and "High Quality". The intended applications for each Renesas Electronics product depends on the product's quality grade, as indicated below.
  - "Standard": Computers; office equipment; communications equipment; test and measurement equipment; audio and visual equipment; home electronic appliances; machine tools; personal electronic equipment; industrial robots; etc.
  - "High Quality": Transportation equipment (automobiles, trains, ships, etc.); traffic control (traffic lights); large-scale communication equipment; key financial terminal systems; safety control equipment; etc.Unless expressly designated as a high reliability product or a product for harsh environments in a Renesas Electronics data sheet or other Renesas Electronics document, Renesas Electronics products are not intended or authorized for use in products or systems that may pose a direct threat to human life or bodily injury (artificial life support devices or systems; surgical implantations; etc.), or may cause serious property damage (space system; undersea repeaters; nuclear power control systems; aircraft control systems; key plant systems; military equipment; etc.). Renesas Electronics disclaims any and all liability for any damages or losses incurred by you or any third parties arising from the use of any Renesas Electronics product that is inconsistent with any Renesas Electronics data sheet, user's manual or other Renesas Electronics document.
7. No semiconductor product is absolutely secure. Notwithstanding any security measures or features that may be implemented in Renesas Electronics hardware or software products, Renesas Electronics shall have absolutely no liability arising out of any vulnerability or security breach, including but not limited to any unauthorized access to or use of a Renesas Electronics product or a system that uses a Renesas Electronics product. RENESAS ELECTRONICS DOES NOT WARRANT OR GUARANTEE THAT RENESAS ELECTRONICS PRODUCTS, OR ANY SYSTEMS CREATED USING RENESAS ELECTRONICS PRODUCTS WILL BE INVULNERABLE OR FREE FROM CORRUPTION, ATTACK, VIRUSES, INTERFERENCE, HACKING, DATA LOSS OR THEFT, OR OTHER SECURITY INTRUSION ("Vulnerability Issues"). RENESAS ELECTRONICS DISCLAIMS ANY AND ALL RESPONSIBILITY OR LIABILITY ARISING FROM OR RELATED TO ANY VULNERABILITY ISSUES. FURTHERMORE, TO THE EXTENT PERMITTED BY APPLICABLE LAW, RENESAS ELECTRONICS DISCLAIMS ANY AND ALL WARRANTIES, EXPRESS OR IMPLIED, WITH RESPECT TO THIS DOCUMENT AND ANY RELATED OR ACCOMPANYING SOFTWARE OR HARDWARE, INCLUDING BUT NOT LIMITED TO THE IMPLIED WARRANTIES OF MERCHANTABILITY, OR FITNESS FOR A PARTICULAR PURPOSE.
8. When using Renesas Electronics products, refer to the latest product information (data sheets, user's manuals, application notes, "General Notes for Handling and Using Semiconductor Devices" in the reliability handbook, etc.), and ensure that usage conditions are within the ranges specified by Renesas Electronics with respect to maximum ratings, operating power supply voltage range, heat dissipation characteristics, installation, etc. Renesas Electronics disclaims any and all liability for any malfunctions, failure or accident arising out of the use of Renesas Electronics products outside of such specified ranges.
9. Although Renesas Electronics endeavors to improve the quality and reliability of Renesas Electronics products, semiconductor products have specific characteristics, such as the occurrence of failure at a certain rate and malfunctions under certain use conditions. Unless designated as a high reliability product or a product for harsh environments in a Renesas Electronics data sheet or other Renesas Electronics document, Renesas Electronics products are not subject to radiation resistance design. You are responsible for implementing safety measures to guard against the possibility of bodily injury, injury or damage caused by fire, and/or danger to the public in the event of a failure or malfunction of Renesas Electronics products, such as safety design for hardware and software, including but not limited to redundancy, fire control and malfunction prevention, appropriate treatment for aging degradation or any other appropriate measures. Because the evaluation of microcomputer software alone is very difficult and impractical, you are responsible for evaluating the safety of the final products or systems manufactured by you.
10. Please contact a Renesas Electronics sales office for details as to environmental matters such as the environmental compatibility of each Renesas Electronics product. You are responsible for carefully and sufficiently investigating applicable laws and regulations that regulate the inclusion or use of controlled substances, including without limitation, the EU RoHS Directive, and using Renesas Electronics products in compliance with all these applicable laws and regulations. Renesas Electronics disclaims any and all liability for damages or losses occurring as a result of your noncompliance with applicable laws and regulations.
11. Renesas Electronics products and technologies shall not be used for or incorporated into any products or systems whose manufacture, use, or sale is prohibited under any applicable domestic or foreign laws or regulations. You shall comply with any applicable export control laws and regulations promulgated and administered by the governments of any countries asserting jurisdiction over the parties or transactions.
12. It is the responsibility of the buyer or distributor of Renesas Electronics products, or any other party who distributes, disposes of, or otherwise sells or transfers the product to a third party, to notify such third party in advance of the contents and conditions set forth in this document.
13. This document shall not be reprinted, reproduced or duplicated in any form, in whole or in part, without prior written consent of Renesas Electronics.
14. Please contact a Renesas Electronics sales office if you have any questions regarding the information contained in this document or Renesas Electronics products.

(Note1) "Renesas Electronics" as used in this document means Renesas Electronics Corporation and also includes its directly or indirectly controlled subsidiaries.

(Note2) "Renesas Electronics product(s)" means any product developed or manufactured by or for Renesas Electronics.

(Rev.5.0-1 October 2020)

## Corporate Headquarters

TOYOSU FORESIA, 3-2-24 Toyosu,  
Koto-ku, Tokyo 135-0061, Japan  
[www.renesas.com](http://www.renesas.com)

## Trademarks

Renesas and the Renesas logo are trademarks of Renesas Electronics Corporation. All trademarks and registered trademarks are the property of their respective owners.

## Contact information

For further information on a product, technology, the most up-to-date version of a document, or your nearest sales office, please visit:  
[www.renesas.com/contact/](http://www.renesas.com/contact/).