
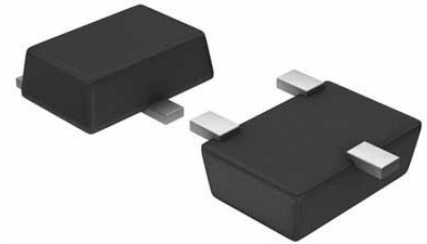


Enhanced single channel power switches

Manufacturer:	Diodes Inc
Package/Case:	SOT23-5
Product Type:	Switches
RoHS:	RoHS Compliant/Lead free 
Lifecycle:	NRND



Images are for reference only

[Inquiry](#)

General Description

AP22811AW5-7 is an electronic component, specifically a power MOSFET (Metal-Oxide-Semiconductor Field-Effect Transistor) manufactured by Diodes Incorporated.

Key Features

It has a low on-state resistance ($R_{ds(on)}$) of 5.5 milliohms (max) at a gate voltage of 10V, which means it can handle high current with low power loss.

It has a maximum drain-source voltage (V_{ds}) of 30V, which means it can handle up to 30 volts of potential difference between its drain and source pins.

It has a small form factor, with a compact SOT-23-5 package.

Application

AP22811AW5-7 can be used in power management circuits such as load switches, DC-DC converters, and battery chargers.

It can be used in portable devices such as smartphones, tablets, and laptops to help manage power consumption.

It can also be used in industrial applications such as motor control, lighting control, and power distribution.

Recommended For You

AP3012KIR-G1

Diodes Inc
SOT23-5

AP2171WG-7

Diodes Inc
SOT23-5

AP2411MP-13

Diodes Inc
MSOP8

AP22966DC8-7

Diodes Inc
DFN-14

APX811-29UG-7

Diodes Inc
SOT143

AP9101CAK6-ABTRG1

Diodes Inc
SOT-26

AP2511M8-13

Diodes Inc

MSOP8

AP2181DMPG-13

Diodes Inc

MSOP8

AP2161DSG-13

Diodes Inc

SOP-8

AP2181MPG-13

Diodes Inc

MSOP8

AP2337SA-7

Diodes Inc

SOT23

AP2151AW-7

Diodes Inc

SOT25

AP2411S-13

Diodes Inc

SOP8

AP2161WG-7

Diodes Inc

SOT23-5

AP2821KTR-G1

Diodes Inc

SOT23-5