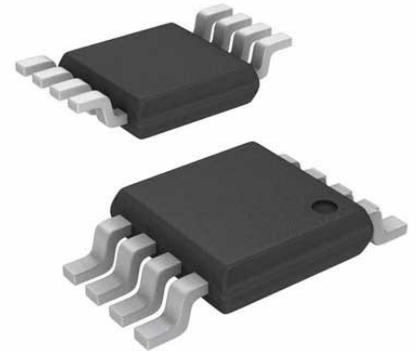


## RF Switch SPDT 0MHz to 4GHz 34dB 8-Pin MSOP Tube



Images are for reference only

[Inquiry](#)

**Manufacturer:** [Analog Devices, Inc](#)

**Package/Case:** MSOP8

**Product Type:** Switches

**RoHS:** RoHS Compliant/Lead free 

**Lifecycle:** Active

### General Description

The ADG918/ADG919 are wideband switches using a CMOS process to provide high isolation and low insertion loss to 1 GHz. The ADG918 is an absorptive (matched) switch having 50 Ω terminated shunt legs, whereas the ADG919 is a reflective switch. These devices are designed such that the isolation is high over the dc to 1 GHz frequency range. They have on-board CMOS control logic, thus eliminating the need for external controlling circuitry. The control inputs are both CMOS and LVTTTL compatible. The low power consumption of these CMOS devices makes them ideally suited to wireless and general-purpose high frequency switching applications.

#### Product Highlights

- 43 dB off isolation at 1 GHz.
- 0.8 dB insertion loss at 1 GHz.
- Tiny 8-lead MSOP/LFCSP.

### Key Features

- CMOS/LVTTTL Control logic
- High off isolation
- Low insertion loss
- <1μA Low power consumption
- 3dB at 4.5GHz Wideband switch

### Application

- Wireless communications
- General-purpose RF switching
- Dual-band applications
- High speed filter selection
- Digital transceiver front end switch
- IF switching
- Tuner modules Antenna diversity switching

### Recommended For You

**ADF4153BCPZ**

Analog Devices, Inc  
QFN

**ADF5355BCPZ**

Analog Devices, Inc  
LFCSP32

**AD8318ACPZ**

Analog Devices, Inc  
LFCSP

**AD6620ASZ**

Analog Devices, Inc  
QFP

**ADF4107BCPZ**

Analog Devices, Inc  
QFN

**ADL5513ACPZ-R7**

Analog Devices, Inc  
LFCSP-16

**AD8319ACPZ**

Analog Devices, Inc  
LFCSP

**ADRF6755ACPZ**

Analog Devices, Inc  
QFN

**ADL5535ARKZ-R7**

Analog Devices, Inc  
SOT89

**AD608AR**

Analog Devices, Inc  
SOP16

**ADF4107BRUZ-REEL7**

Analog Devices, Inc  
TSSOP16

**ADRF6780ACPZN**

Analog Devices, Inc  
QFN

**AD8317ACPZ**

Analog Devices, Inc  
LFCSP

**AD608ARZ**

Analog Devices, Inc  
SOP16

**AD8318ACPZ-REEL7**

Analog Devices, Inc  
LFCSP