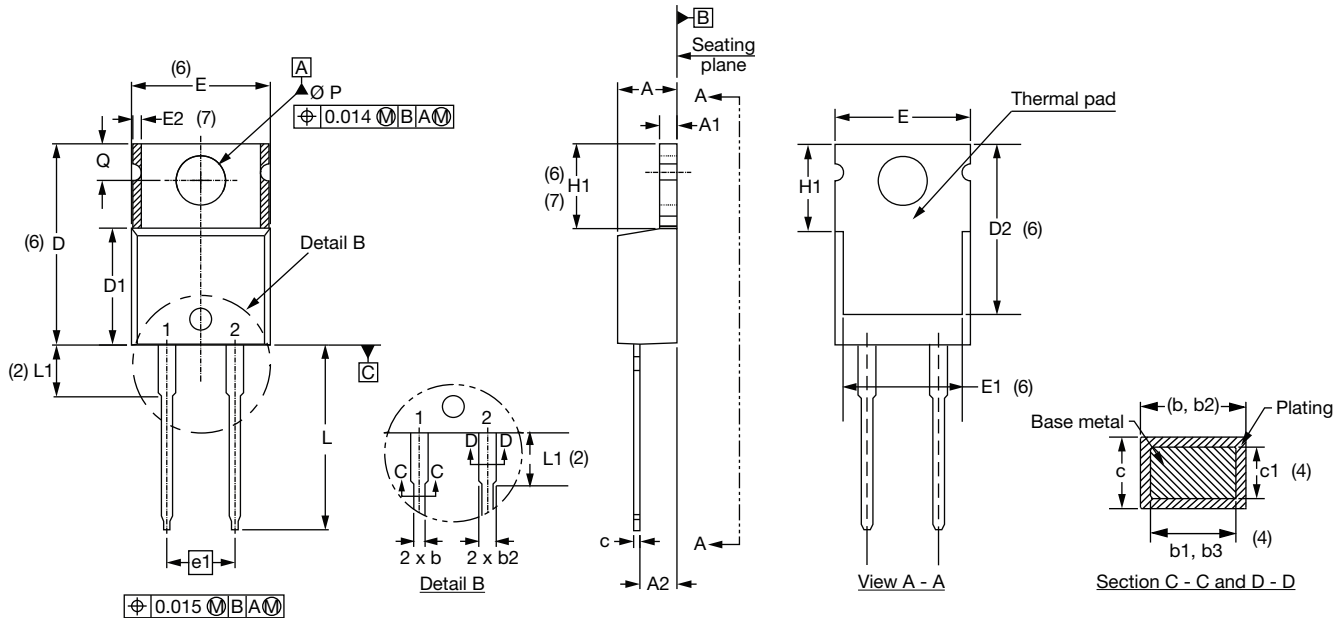




# TO-220AC 2L

**DIMENSIONS** in millimeters and inches



| SYMBOL | MILLIMETERS |       | INCHES |       | NOTES |
|--------|-------------|-------|--------|-------|-------|
|        | MIN.        | MAX.  | MIN.   | MAX.  |       |
| A      | 4.25        | 4.65  | 0.167  | 0.183 |       |
| A1     | 1.14        | 1.40  | 0.045  | 0.055 |       |
| A2     | 2.56        | 2.92  | 0.101  | 0.115 |       |
| b      | 0.69        | 1.01  | 0.027  | 0.040 |       |
| b1     | 0.38        | 0.97  | 0.015  | 0.038 | 4     |
| b2     | 1.20        | 1.73  | 0.047  | 0.068 |       |
| b3     | 1.14        | 1.73  | 0.045  | 0.068 | 4     |
| c      | 0.36        | 0.61  | 0.014  | 0.024 |       |
| c1     | 0.36        | 0.56  | 0.014  | 0.022 | 4     |
| D      | 14.85       | 15.25 | 0.585  | 0.600 | 3     |
| D1     | 8.38        | 9.02  | 0.330  | 0.355 |       |
| D2     | 11.68       | 12.88 | 0.460  | 0.507 | 6     |
| E      | 10.11       | 10.51 | 0.398  | 0.414 | 3, 6  |

| SYMBOL   | MILLIMETERS |       | INCHES |       | NOTES |
|----------|-------------|-------|--------|-------|-------|
|          | MIN.        | MAX.  | MIN.   | MAX.  |       |
| E1       | 6.86        | 8.89  | 0.270  | 0.350 | 6     |
| E2       | -           | 0.76  | -      | 0.030 | 7     |
| e1       | 4.88        | 5.28  | 0.192  | 0.208 |       |
| H1       | 5.84        | 6.86  | 0.230  | 0.270 | 6, 7  |
| L        | 13.52       | 14.02 | 0.532  | 0.552 |       |
| L1       | 3.32        | 3.82  | 0.131  | 0.150 | 2     |
| $\phi P$ | 3.54        | 3.73  | 0.139  | 0.147 |       |
| Q        | 2.60        | 3.00  | 0.102  | 0.118 |       |

**Notes**

- (1) Dimensioning and tolerancing as per ASME Y14.5M-1994
- (2) Lead dimension and finish uncontrolled in L1
- (3) Dimension D, D1 and E do not include mold flash. Mold flash shall not exceed 0.127 mm (0.005") per side. These dimensions are measured at the outermost extremes of the plastic body
- (4) Dimension b1, b3 and c1 apply to base metal only
- (5) Controlling dimension: inches
- (6) Thermal pad contour optional within dimensions E, H1, D2 and E1
- (7) Dimension E2 x H1 define a zone where stamping and singulation irregularities are allowed
- (8) Outline conforms to JEDEC® TO-220, except D2, where JEDEC® minimum is 0.480"