
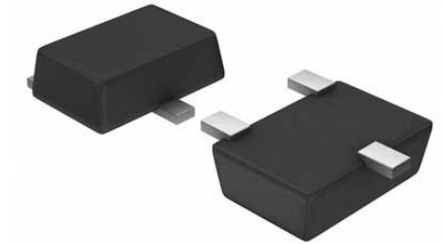


Analog Switch Single SPST 5-Pin SSOP T/R

Manufacturer:	ROHM Semiconductor
Package/Case:	SOT23-5
Product Type:	Switches
RoHS:	RoHS Compliant/Lead free 
Lifecycle:	Active



Images are for reference only

[Inquiry](#)

General Description

Analog switch series of ROHM that is compatible with 4S, 4000B series corresponds to high power supply voltage and has wide lineup built in circuit from 1 to 4. It is able to be used with various applications.

Key Features

Low power consumption

L-TTL2 and LS-TTL1 Inputs can be driven directly

Excellent linearity

Recommended For You

[BD3375MUV-ME2](#)

ROHM Semiconductor

VQFN-48

[BD3376EFV-CE2](#)

ROHM Semiconductor

HTSSOP-B30

[BD91411GW-E2](#)

ROHM Semiconductor

QFN

[BD3375KV-CE2](#)

ROHM Semiconductor

48-LQFP

[BD91N01NUX-E2](#)

ROHM Semiconductor

10-UFDNF

[BH6260MWX-E2](#)

ROHM Semiconductor

AN