
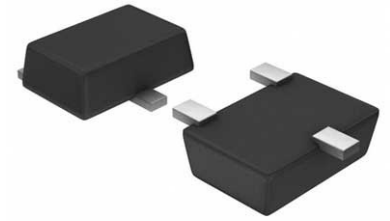


RF Switch SPDT 0MHz to 3GHz 19dB Automotive 6-Pin SOT-23 T/R

Manufacturer:	Analog Devices, Inc
Package/Case:	SOT23-6
Product Type:	Switches
RoHS:	RoHS Compliant/Lead free 
Lifecycle:	Active



Images are for reference only

[Inquiry](#)

General Description

Key Features

- 0.27dB Low insertion loss
- 54dBm High input IP3
- Low DC power consumption
- 0/+3 to 0/+8V Positive control

Application

RF Communications, Test & Measurement, Automotive, Portable Devices

Recommended For You

HMC624ALP4E

Analog Devices, Inc
QFN24

HMC952ALP5GE

Analog Devices, Inc
QFN

HMC361S8GE

Analog Devices, Inc
SOP-8

HMC253AQS24E

Analog Devices, Inc
QFN

HMC346MS8G

Analog Devices, Inc
MSOP8

HMC1119LP4ME

Analog Devices, Inc
QFN

HMC659LC5

Analog Devices, Inc
QFN

HMC909LP4E

Analog Devices, Inc
QFN

HMC564LC4

Analog Devices, Inc
QFN

HMC1021LP4E

Analog Devices, Inc

QFN

HMC241AQS16E

Analog Devices, Inc

SSOP16

HMC424LP3E

Analog Devices, Inc

QFN

HMC662LP3E

Analog Devices, Inc

QFN

HMC8038LP4CE

Analog Devices, Inc

QFN16

HMC363S8G

Analog Devices, Inc

SOP8