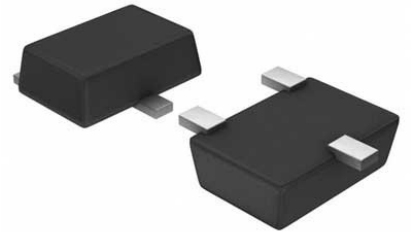


## EEPROM Serial-SPI 1K-bit 128 x 8 3.3V/5V 6-Pin SOT-23 T/R



Images are for reference only

[Inquiry](#)

**Manufacturer:** [Microchip Technology, Inc](#)

**Package/Case:** SOT23-6

**Product Type:** Memory

**RoHS:** RoHS Compliant/Lead free 

**Lifecycle:** Active

### General Description

The Microchip 25LC010A is a 1 Kb Serial EEPROM utilizing the industry standard Serial Peripheral Interface (SPI) compatible serial bus. The device is organized as one block of 128 x 8-bit and is optimized for use in consumer electronics, industrial, medical, and automotive applications where reliable and dependable nonvolatile memory storage is essential. Software write protection allows the user to protect ¼, ½, or the entire memory array. A hardware write protect pin is also provided, which additionally protects against inadvertent writes to the status register and memory array. The EEPROM is available in a variety of space-saving packaging options.

## Key Features

128 x 8-bit (1 Kbit)

Supports SPI modes 0 and 3

Up to 10 MHz clock

Self-Timed Erase and Write Cycles (5 ms max.)

Read current: 5 mA (Max) at 10 MHz

Write current: 5 mA (Max) at 10 MHz

Standby current: 5 uA (Max) at 5.5 V

Block Write Protection: Protect 1/4, 1/2 or Entire Array

More than 1 million erase/write cycles

Data retention > 200 years

Industrial (I): -40°C to 85°C

Extended (E): -40°C to +125°C

Extended+ (H): -40°C to +150°C

Automotive AECQ-100 Qualified1

Factory Programming Available

Available in standard packages including 8-lead PDIP and SOIC, and advanced packages including 8-lead MSOP, 8-lead TSSOP and rotated TSSOP, 8-lead 2x3 DFN, and 6-lead SOT-23

## Recommended For You

---

### **SST25VF080B-50-4C-S2AF**

Microchip Technology, Inc

SOP8

### **AT25256B-SSHL-T**

Microchip Technology, Inc

SOP8

### **AT24C256C-SSHL-T**

Microchip Technology, Inc

SOP8

### **AT25040B-SSHL-B**

Microchip Technology, Inc

SOP-8

### **AT25128B-SSPDGV-T**

Microchip Technology, Inc

SOP8

### **23K256-I/SN**

Microchip Technology, Inc

SOP8

### **AT27C256R-70JU**

Microchip Technology, Inc

PLCC32

### **25AA1024-I/SM**

Microchip Technology, Inc

SOP8

### **AT25320B-SSHL-T**

Microchip Technology, Inc

SOP8

**25AA1024T-I/MF**

Microchip Technology, Inc  
DFN-8

**AT25512N-SH-T**

Microchip Technology, Inc  
SOP8

**25LC1024-I/SM**

Microchip Technology, Inc  
SOP8

**25AA256T-I/SN**

Microchip Technology, Inc  
SOP8

**25LC640A-I/SN**

Microchip Technology, Inc  
SOP8

**AT25640B-SSHL-T**

Microchip Technology, Inc  
SOP8