
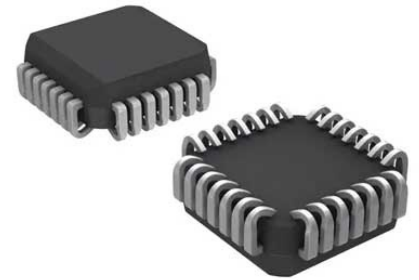


Configuration SRAM for FBGA

Manufacturer:	Intel Corp
Package/Case:	PLCC20
Product Type:	Programmable Logic ICs
RoHS:	RoHS Compliant/Lead free 
Lifecycle:	Obsolete



Images are for reference only

[Inquiry](#)

General Description

The MAX 9000 family of in-system-programmable, high-density, high-performance EPLDs is based on Altera's third-generation MAX architecture. Fabricated on an advanced CMOS technology, the EEPROMbased MAX 9000 family provides 6,000 to 12,000 usable gates, pin-to-pin delays as fast as 10 ns, and counter speeds of up to 144 MHz.

High-performance CMOS EEPROM-based programmable logic devices (PLDs) built on third-generation Multiple Array Matrix (MAX®) architecture

Key Features

Easy-to-use 4-pin interface

Low current during configuration and near-zero standby mode current

Recommended For You

[EPM3256AQC208-10N](#)

Intel Corp
QFP208

[EPCQ32ASI8N](#)

Intel Corp
SOP8

[EPCQ32SI8N](#)

Intel Corp
SOP8

[EPCQ64ASI16N](#)

Intel Corp
SOP16

[EPCQ16SI8N](#)

Intel Corp
SOP8

[EPC21I32](#)

Intel Corp
QFP

EPM7128STC100-15N

Intel Corp

QFP100

EP1C6Q240I7N

Intel Corp

QFP240

EPCQ128SI16N

Intel Corp

SOP16

EPM7128SLC84-15N

Intel Corp

PLCC

EPC1213PC8

Intel Corp

DIP8

EP1K30TC144-3N

Intel Corp

QFP

EPCS1S18

Intel Corp

SOP-8

EPC1PI8N

Intel Corp

DIP8

EPC2LI20N

Intel Corp

PLCC